

Jot & Tittle

A PUBLICATION OF CENTRAL UNITED METHODIST CHURCH

FEBRUARY / MARCH 2024

lent

/ˈlent/
noun

- a season of forty days, not counting Sundays, which begins on Ash Wednesday and ends on Holy Saturday
- a preparation for celebrating Easter
- derives from the Anglo-Saxon *lencten*, or “spring”
- historically characterized by: self-examination and repentance; prayer, fasting, and self-denial; and by reading and meditating on God’s Word

Seven Tips for a Holy Lent

The two months of this edition of the Jot and Tittle – February and March – neatly encompass the season of Lent. This is the period of 40 days (not counting Sundays) that precede Easter. In the early church this time was used to prepare converts for baptism on Easter Sunday. Over time we learned that *everyone* can benefit from a season of recommitment to their faith.

Like most things, the more we put into Lent the more we get out of it. Begin thinking now about how you might make this a season of conversion (or re-conversion) for you.

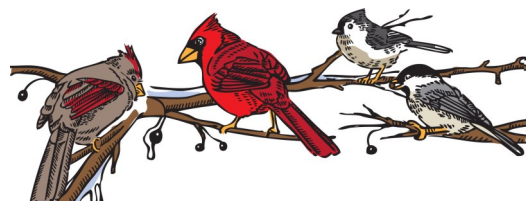
(Cont. on pg. 2)



INSIDE this issue

- Pg. 1, 2 Message from the Pastor/
Lenten Schedule
2 Financial Statement
3 Wesley Golf Classic
4 Lenten Study, Music Ministry
5 Music Ministry. (cont), Gifts & Memorials
6, 7 UWF
8 Faith & the Arts
9 UWF (cont), Mission News
10, 11 Mission News (cont)
12 Congregational Care
13-16 Children & Family Ministries
17 Palm Sunday Donkey Walk
18 Easter Egg Hunt
19, 20 Youth Ministry
21, 22 February Calendar
23, 24 March Calendar
25 Kid’s Page

VISIT US ONLINE www.centralumc.org



FROM THE PASTOR:

Seven Tips for a Holy Lent

(Cont.)

Here are a few suggestions:

- (1) **Start with Ash Wednesday.** Wednesday 2/14 will be the first day of Lent. A special 6:00 pm worship service will include the imposition of ashes – an invitation to reflect on our sinfulness and our mortality and anticipate Easter Sunday.
- (2) **Consider a practice of self-denial or fasting.** Give something up for the 40 days, such as: a food or beverage; social media; complaining; online shopping; or talking about people when they're not present. Or, pick a day of the week to skip breakfast and lunch, then breaking the fast at 3:00 pm to honor the hour Christ died on the cross.
- (3) **Embrace repentance.** Intentionally and specifically repent of your sins each day, naming them out loud to God in prayer. Always end by saying, "In the name of Jesus Christ, I am forgiven."
- (4) **Lean into the Lord's Prayer.** We will reflect on a different part of the Lord's Prayer each Sunday from 2/18 to 3/31. Deepen this by praying the Lord's Prayer on your own, and/or attending the Study and Practice sessions on Wednesdays at 5:30 pm.
- (5) **Attend worship.** Make a commitment to be present in worship each Sunday and introduce yourself to someone new each week. We'll be offering communion at the 8:45 service every Sunday as a special Lenten observance.
- (6) **Read Scripture.** Build a daily practice of Bible reading using our suggested passages (found in each week's bulletin) or by reading a chapter from Mark and then Luke each day.
- (7) **Observe Holy Week.** Make plans to join us for worship on Maundy Thursday (3/28) and Good Friday (3/29) at 6:00 pm. These somber services are important ways to "keep watch" with Christ during his last supper and crucifixion.

These are only suggestions. There are many ways to observe a Holy Lent. Whatever you do, be sure to keep an eye on Easter! We'll greet the sunrise at 7am on March 31 at the East Campus in Haw Creek before filling our sanctuary at 8:45 and 10:55am. I can't wait to celebrate the resurrection with you!

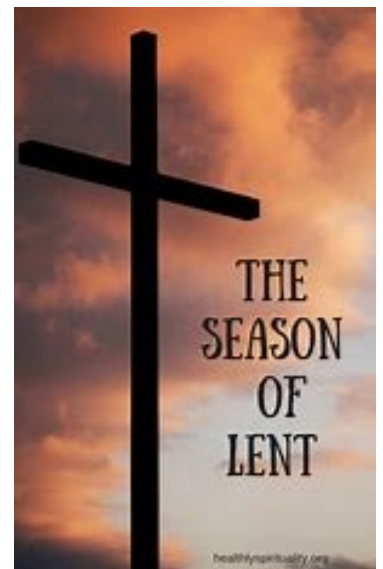
Much love,
Mary

FINANCIAL STATEMENTS

2023 Budget
\$1,769,556

Revenue Received
\$1,503,126
December 2023

Revenue Received
\$1,427,376
December 2022





**THE GEORGE WEEKLEY
GOLF CLASSIC
PRESENTED BY THE
WESLEY FOUNDATION
AT WCU**

LAKE JUNALUSKA GOLF COURSE

SATURDAY APRIL 27th

SHOTGUN START AT 9 AM
LUNCH PROVIDED

18 HOLES WITH CARTS
PRIZES & AWARDS

COST: \$75 PER PLAYER
4 PLAYER TEAMS

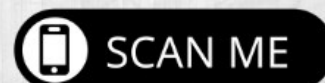
EMAIL ADAM AT ADAM@WCUWESLEY.COM WITH
ANY QUESTIONS

REGISTER NOW AT
WWW.WCUWESLEY.COM/GOLF-CLASSIC

L E N T 2 0 2 4 

Lord, teach us to pray

A study and practice of the Lord's Prayer



Wednesdays at 5:30pm February 21st - March 27th

Coming soon: a chance to study and practice the Lord's Prayer! Dr. Mary Brown and Rick Kuenning invite you to join them for six sessions. Please RSVP so we can prepare an appropriate plan and space; use the QR code to go directly to the event on our church software.

Children's Choir is off and running in 2024!

If you have children ages 4 years through 5th grade we would love to have them involved in Central's Children's Choir ministry and Sunday afternoon Children's Programming. We meet in the Fellowship Hall for lunch after worship at 12:00 pm and then have choir rehearsal, programs, games, and fellowship. We end at 2:00 pm. The children's choir will sing throughout the Winter and Spring months during Worship. Contact Linda Haggard at: lhaggard@centralumc.org for more information.

- "Music is the heart of life". Franz Liszt

Youth Choir is rolling in 2024!

All Central youth, and friends of Central, are invited to participate in Youth Choir. We meet as part of our Sunday afternoon Youth/Children/Family Fellowship time. Lunch is at 12:00 pm for everyone and then youth and children go to programs, fellowship, and choir.



Youth Choir is for all 6-12 grade youth and their friends and we meet in the church choir room from 1:30-2:00 each Sunday. The youth choir will be leading worship music throughout the winter and spring months. Contact Linda Haggard at lhaggard@centralumc.org for more information.

- "I don't sing because I'm happy; I'm happy because I sing." William James

(Cont. on pg. 5)

Holy Week Music March 24 — March 31, 2024

(Cont. from pg. 4)



Palm Sunday will feature our Children's Choir, Youth Choir, Chancel Choir and Brass Ensemble. Central's Good Friday Tenebrae service will feature special music by our Chancel Choir, and soloists. Easter Sunday will feature our Chancel Choir, organ, and brass ensemble as they sing and perform pieces celebrating the resurrection of Christ!

Corey Powell and Linda Haggard invite any interested singers to be a part of our Palm Sunday, Holy Week, and Easter music journey. Chancel Choir meets on Wednesday evenings from 6:30-7:30 pm. Contact lhaggard@centralumc.org for more information.



Pat's Picks for December and January are in the Library window. If you are interested in reading one of them, please ask one of our Sunday librarians to get one for you. All of the "Pastor's Picks" from previous months are grouped together on the library shelf marked "Pastor's Picks."

We also have monthly magazines that you may check out. They are in a rack on the wall beside and behind the library desk and on the coffee table. We keep the magazines for one year and back issues can be found on the shelves behind the desk. They are:

Christianity Today
Sojourner's
The Christian Century

Books and magazines can be checked out for a period of two weeks and we ask that you please write down the appropriate information in the notebook on the library desk.

In Honor of: Linda Haggard
By: Steve & Cindy Oak

In Honor of: Kathy Leftwich
By: S. G. McCracken

In Honor of: Lori Brinson
By: Laurel Tielis

In Memory of: Barbara Macon Brown
By: Brenda Brown

In Memory of: Judy Scroggs
By: Burt & Donna Anderson

Susan Dermid
Robbin Jean Russell
Beem
Suzanne & Henry
Belada

Suzanne Brown
Dewey & Carolyn Craig
Ken & Ellen Kaplan
Paula Eller
Dr. Richard and Brenda Wing
Robert and Melanie Dunn
Kaye Watts
Ken Johnson
Ross Sloan
Mel & John Hornsby

In Memory of: Scott Gaston
By: Madeline Moseley

In Memory of: Dayton Matlick
By: Cullinan Foundation

In Memory of: Bishop Daly Pope Garnett
By: Stanford Garnett





United Women in Faith

Who We Are:

We believe love in action can change the world. Driven by God's love and united in sisterhood, we work to improve the lives of women, children and youth. Every day, we show up. We take action. We get it done. And we invite you to join us.



Eve Circle celebrated Nancy Stancil's 101st birthday at the January meeting, Nancy was video recorded by Dick LeDuc as she shared her experiences and answered questions from 11 members. Nancy continues to be an appreciated and active member of Eve Circle.

(Cont. on pg. 7)



(Cont. from pg. 6)

The Eve Circle will meet February 4 at 10:00 am at the home of Sharon LeDuc. Members should bring Pledge to Mission and Call to Prayer & Self Denial donations. Members who would like to contribute to a meal at Haywood Street Congregation Respite should bring one or two quarts of their homemade soup of choice.

The March 5 meeting will be at Brooks-Howell or at Central. We will be assembling hygiene kits for women at Transformation Village and planning the March 12 dinner we will serve there.

The April meeting will be a visit to Haywood Street Congregation for a viewing and discussion of the fresco, "Theirs is the Kingdom." Visitors are also welcome at all meetings and should contact skleduc@prodigy.net to be notified of any changes.

The Anna Circle will meet Wednesday, February 7 in the Church Parlor at 10:00 am. We will continue our study of women in the Bible with a discussion of the Samaritan Woman.

At the March 6 meeting our program will be about Mary of Bethany. Anyone is welcome to join us. For additional information, contact Carol Rychly at: crychly@charter.net.

Ruth Circle meets the first Tuesday of each month at 10:00 am in the Welcome Center/Library. On February 6, we will have a guest speaker, Mary Messarra, Director of the ABCCM Crisis Ministry Cumberland Avenue location. We will be collecting a donation of hearty soups for ABCCM. Also, in February we will continue to collect for the United Women in Faith Pledge for 2024 and review our Circle's goals for 2024.

For March our guest speaker has not been finalized. Our ABCCM non-perishable food donation will be peanut butter. We will review the WNC Conference United Women in Faith Vision and Goals for 2024 with a focus on "What is Climate Justice?" and "What is Criminalization of Communities of Color and Mass Incarceration?"

For additional information, contact Kim Everette at: kimeverette525@gmail.com. Come and join us! Everyone is welcome!

Deborah Circle meets the second Tuesday of the month in a member's home at 10:00 am. Our next two meetings will be February 13 and March 12. Our February program follows the program book, with discussions about ways to help local ministries serving women, children and youth.

March will continue that program theme, along with an opportunity to share through prayer and self denial. All are welcome. Questions can be directed to Susan Snell at: ssnell123@bellsouth.net.

Martha Circle - Co-Lead by Laura Steil and Kathy Leftwich, Martha Circle is a group of women aged 30s – 60s who meet monthly to enjoy a program, fellowship, and a service project or two (or three!). We welcome any new members (of any age) who are interested in joining us for fellowship as we seek to hear God's word for our lives.

Martha Circle meets on the second Tuesday of each month, 6:30 pm, at Central United Methodist Church. We meet in the evening because many of our members are still working. Martha Circle takes a break during the months of June, July, and August. Some of our annual activities include a September kick-off meal and fellowship, an end-of-year Appetizer and Dessert Fiesta with ornament exchange, a New Year's soup supper together, and service projects such as sponsoring a college student as they equip their dorm room, supporting the Maureen Carr Memorial UWF Scholarship with donations to Peace Lights, and buying gifts for the Angel Tree children and families.

(Cont. on pg. 9)



Faith and the Arts is very honored to present artwork by African American artist Shirley Walker Whitesides in the Church Street Gallery, January 18 through March 5.

Whitesides is a local artist who was born in Rocky Mount, NC to very creative parents, James and Corena Walker. With encouragement from her parents, she, along with four sisters, received B.A. degrees in Arts Education. Whitesides says, "My artwork throughout the years has been based on everyday life experiences, family traditions, African American

culture, and using of bold colors to emphasize my message through art. As a contemporary artist, I like to create artwork using new techniques, such as incorporating digital art and photography into my paintings, designing mixed media collages, and quilt-making to tell my stories."

Because of the history of slavery and the persistence of inequities and racism, the Black Art Movement (BAM) found new ways to present the black experiences and maintain African American culture and traditions in the community. BAM conveyed the message of having or depicting black pride in your artwork. As an Arts Educator, Visual Artist, and Historian, Whitesides has spent over 50 years inspiring youth to achieve through their creative talents.

Whitesides received her Master of Art in Middle-Grade Education from Western Carolina University and her Visual Arts Bachelor of Arts Degree from NC Central University.

Whitesides is married to Alfred J. Whitesides, a retired banker and Buncombe County Commissioner. She is the proud mother of two daughters and has three grandsons.

Whitesides was the Visual Arts Specialist in Asheville City Schools System for 34 years.

Currently, Whitesides is the President and CEO of Delta House Life Development, Inc. and is a founding member of the organization.



(Hanging the display left to right, Shirley Whitesides, Hugh Meyer, Peter Barrett, and Alexandra Holland)

There will be a "Meet the Artist" event on Sunday, February 25 at 9:50 am in the Fellowship Hall. Artist Shirley Whitesides will provide insight into the inspiration, understanding and significance of her art which is on display through March. The color in the artwork is breathtaking, and the content ranges from Africa to Asheville.

Shirley has lived much of the history portrayed in her art. This is an opportunity to listen and learn some local Black history through Shirley's art. The Faith and the Arts Committee and the Church and Society Committee are hosting this event. All are welcome and are encouraged to view the display prior to the event.



United
Women
in Faith

(Cont. from pg. 7)

Martha Circle (Cont) - Our January Soup Supper was postponed until February because of inclement weather. The good news — you have not missed it! Please plan to join us for soup, sides, dessert, and fellowship on Tuesday, February 13, in the church library. If you do not have time to cook or bake, come anyway! We always have plenty of room at our table, plenty of food and would love to have you.

Questions? Need more information? Please contact one of Martha Circle's leaders, Laura Steil at: laura.steil30@gmail.com or Kathy Leftwich at: kathleencleftwich@gmail.com and we'll be glad to talk with you.

Unnamed Women's Circle

- We are a group of young women in our 20s, 30s & 40s. We gather for food and fellowship downtown once a month. We have a fun time- sharing stories, laughing, holding each other up in prayer and support. We are always welcoming new members!

Nursery is available for children ages 0-5 (not yet in kindergarten) at the church. We will meet on February 21 and March 13. We meet at 6:00 pm at a different restaurant downtown each month.

If you would like to attend one of our next meetings, email aowens@centralumc.org. We hope to see you there!



Reconciling Ministries Network (RMN) What Is It?

Central's Reconciling Ministries Group is an affiliate with the Reconciling Ministry Network. Simply put, RMN works globally to advance justice and full inclusion for everyone, including LGBTQ+ people, in the United Methodist Church and beyond. It is UMC congregations, groups, and individual members working together for that purpose. Learn more at:

<https://rmnetwork.org>

Central's RMG Connection

This ministry is casual and social, but action oriented. Connect with us the first Sunday monthly at 12:45 pm. Find us at the Fellowship Hall level room #219, near the stairs, after the church pot-luck meal at 12:15PM. For inquiries and to receive RMG's monthly e-mailed update, contact facilitator, Mary Z. Longknight at: mzlongstreth@gmail.com.

Support RMG Actions

Interested in helping others? Consider a short project or multiple activities by contacting a member or staff. RMG awaits your participation in touching other lives!

Money helps. When donating with cash enclose a note, or use a check's memo line, to designate it for the RMGroup and/or scholarships. These can be placed in the offering plate or checks mailed to Central United Methodist Church, 27 Church St., Asheville, NC 28801. Thank you donors!

Thanks for 2024's Wonderful Beginning

The Kenya education system's academic year began in January. Central UMC gave a significant boost for Moheto First UMC's education ministry in the community. Because of the pooled donations from Central individuals, the Missions Council, and year-long fundraising by the Reconciling Ministry Group, ten high school girls' attendance in 2024 was assured after \$12,850 was wired to First Moheto UMC.

(Cont. on pg. 10)



Thanks for 2024's Wonderful Beginning (Cont. from pg. 9)

By the United Nations' assessment of Kenya's poverty, the average household lives on \$5.00 per day. The 2024 school year cost per student increased by \$150 to total \$1,285. A girls' attainment of a high school education is costly and the education of boys is the social-cultural priority among families.

On behalf of the recipient families and First Moheto UMC that oversees scholarship allocations, Pastor Kennedy Mwita was asked to convey deep gratitude and thanks to the Central congregation and contributors for this continuing support: "We thank God for your support."

Studying for Success

Dorine, a Moheto scholarship girl, has graduated, passed national academic exams, and was accepted by Africa University, a private, Pan-African and United Methodist related institution in Zimbabwe. So, she began an adventure in a different country's culture and higher academics with a vision for her future, a



Degree in Bachelor of Science Honors in Agriculture and Natural Resources. Her first semester courses are: Anatomy and Physiology of Farm Animals, Critical Thinking, Logic and Problem Solving, French for Beginners I, Introduction to Intellectual Property, and Communications Skills

in Agriculture and Natural Resources. A serious student, Dorine earned high academic grades, 3.8 of 4 points, and is moving forward.

Ideas, Priorities, and Scheduling

The arrival of 2024 was preceded by a brainstorming meeting of the Reconciling Ministries Group (RMG), to identify goals, priorities, and actions. It will foster collaboration with other groups where interests and resources are mutually beneficial. It will continue to support the Moheto Scholarships fundraising and participation in the Asheville Blue Ridge Pride Festival.



How to Recycle Batteries

Central's Creation Care committee is starting a new way to recycle your Lithium-ion and rechargeable batteries. There is a plastic bucket in the Fellowship Hall with masking tape attached to the bucket. Please use the masking tape to cover the battery terminals before you place your battery in the bucket. The committee will take the batteries to an appropriate location for recycling. NOTE: PLEASE, NO AA OR AAA BATTERIES! (See below.)

Here are the Buncombe County Guidelines :

Standard household alkaline batteries (AA, AAA) do not contain hazardous chemicals and may be disposed of in the trash. For added safety, attach tape to both ends of the alkaline batteries before disposal.

Recycle lithium-ion and other rechargeable batteries as follows: (1) Tape the terminal ends of the batteries and bag individually in sealable plastic bags. (2) Recycle these batteries in recycling bins provided at home improvement and office supply stores, such as Lowe's, Home Depot, and Best Buy; or in recycling bin in Fellowship

(Cont. on pg. 11)



Recycle lithium-ion and other rechargeable batteries (Cont. from pg. 10)

Hall (see above). For details and additional locations, visit Call2Recycle.org.

- Do not place lithium-ion batteries or other rechargeable batteries inside trash container.
- Do not place any type of batteries into a curbside recycling bin.
- The Buncombe County Landfill does not accept any household-type batteries for recycling. At present, only large, lead-acid batteries, like car batteries, are accepted.



The Creation Care Committee is asking for several **“Recycle Buddies,”** church members who will help other church members recycle electronic items. These volunteers will be assigned to work with a church member who is unable to take the electronics to a recycling site (like Best Buy) or event (like Hard2Recycle), to take those items for them. Items include cell phones, computers, monitors, small TVs, cords, power supplies, computer mice and cables. If you are willing to help with this project, please email Karen Crutchfield (kcrutch@aol.com) to volunteer. When the list of volunteers is complete, we will ask for members who need help with electronics recycling.

132.4 MILLION PLASTIC BAGS

USED IN BUNCOMBE COUNTY, NC, EACH YEAR

(WWW.PLASTICFREEWNC.ORG AND SIERRA CLUB)



ECO-Tips

Winter’s cold dark days are fleeting. Shrub and tree buds herald the birth of the coming spring. Shortly, songbirds will start returning to sing. Soon butterflies, bees and insects will appear in the wilds, and in those yards whose owners choose



not to apply chemicals to their lawns. It’s time to gather friends, old and new, for hikes in the wilderness, to gaze on nature’s beautiful blooming wildflowers as they return to rise in full springtime glory. With North Carolina Wilderness surrounding us, it’s hard to be lonely when communing with nature—God’s Creation.

- Barry Miller, Creation Care Committee

Congregational Care Council News



2024 Deepening our Care and Widening our Support

Consider connecting with an ongoing care ministry:

- Bereavement
- Pastoral Care (provided by our Ministerial Staff)
- Child and Family
- Stephen Ministry (new training class in 2025)
- Circle of Prayer
- Recovery Care Resources (launching in 2024)
- Homebound
- Prayer Shawl

Consider seeking out support or connecting with someone who is in need of support from any of the above care ministries.

Consider helping out with our "On Call" care ministries:

- ♦ Provide meals when needed as part of our "Meal Train" ministry.
- ♦ Be our "Meal Train" Coordinator to set up meal trains on line when needed.
- ♦ Help with set up and clean up for funeral receptions when needed (Bereavement Committee).
- ♦ Become a Sunday morning Worship Buddy when needed.

If you have been feeling that "nudge" to do something that would connect you to others, Central's Congregational Care ministries provide just that:

relationships with purpose and support.

Contact Pastor Lisa with any questions and/or additional information on how you can become connected.

You are needed....but we also care about You.

Dementia Support at Central

Since last fall, our Congregational Care ministry is offering twice-monthly meetings with local nonprofit, Dementia Partners. The gatherings provide a supportive setting both for folks suffering from dementia and their partners in care, because dementia affects families and caregivers, too.

Leaders facilitate discussions around shared experiences and coping techniques while providing valuable information and education. Meetings happen on 1st and 3rd Tuesdays of the month at 2:00 pm in the George Beverly Library and Welcome Center. Reach out to Pastor Lisa for more information, or to learn about other meeting times in the Asheville community.





Family Life Events: Churchwide Potlucks

Back in December, our church family welcomed the start of the new church calendar year with a meal. Equal Plates Project supplied the main course and one side. The church showed up and provided the rest! It was such a fun opportunity for folks to know one another better with ice-breaker questions at each table, along with a youth-led spontaneous Christmas pageant, and Advent themed craft. Fun was had by folks of all ages!

There will be many more opportunities to attend our church-wide potlucks. In fact, we are going to do them once a month! Some will be party-themed events with activities and get-to-know you games for **everyone!** There will always be a potluck on the first Sunday of every month. We will leave the 10:55 am worship communion table and gather around another community table. These family life events are for the benefit of the church to grow together. To know one another and lift each other up in the ways needed. **Just bring a side dish or dessert to share!**

We hope you will join us for our next two events:

- **Church-wide Birthday party – February 4, 12 pm** – Happy Birthday! Not your birthday for another few months? Not today! We will all celebrate our birthday together. Tables will be dedicated to each birth month! There will be cake, party games and more!
- **Churchwide Potluck – March 3, 12 pm** – Bring a side dish and dessert to share. Main dish will be provided by Equal Plates Project. Each table will be set with ice-breaker questions — a wonderful chance for new friendships, conversations, and shared interests.



Children's Ministry Events

There are a variety of opportunities for our young families each and every week. There is something for everyone! We hope you will take the time to see what all is going on the next two months.

- **Sunday School** – Every Sunday, 9:45-10:45 am, Room 301. For ages 4 years old to 5th grade. We use Godly Play curriculum to use imagination as we learn about scripture and the church.
- **Children's Church** – Every Sunday (except the 1st Sunday/Communion) at 10:55 am worship only. After Children's Time, children are invited to the chapel for a story and discussion.
- **After Church Activities** – Every Sunday (except Easter) after the 10:55 am worship, we gather in the Fellowship Hall for family lunch. From 12:30-1:15 pm children are invited to participate in Children's choir. From 1:15-2:00 pm children have the opportunity to know one another better through team building games/activities.

Vacation Bible School – Save the Date

Monday July 15 – Friday July 19
9:00 am – 12:00 pm

We will be journeying back in time with our theme: *Hometown Nazareth*. We hope you'll join us for another fun year of learning, singing, crafting, and more! Further details will be available soon.

If you are an adult or youth who wants to volunteer, please email:

aowens@centralumc.org

(Cont. on pg. 14)



C4C East

Since August of 2023, we have been building a partnership with Haw Creek Elementary School and the Central East Community. Many of our planting team members prepared breakfast one cool fall morning for a teacher appreciation event. Some have signed up to support the new Math Buddies program. The monetary donations given in 2023 were used to supply a set of shoes for every size represented (male/female) in the school. We partnered with Trinity Presbyterian to supply and set up these shoes for students. Several shoes have already been utilized and replaced on the shelf.

In November 2023, Deb Jones signed on to be the lay leader of C4C East and the Math Buddies Program. After further conversations with the principal, there was discussion of a potential book barn outside the school. Within 5 days of the request, Dale Gulick built the book barn, painted it in school colors, and installed it. After the installation, Pastors Ann H Owens and Patrick Neitzey (bringing little Silas with him!) brought



donated books to fill the inside of the Book Barn. Seen pictured with Principal Christen Davidson and Assistant Principal Jeremey Aten – administration shared the

excitement students have shared in the book barn. Thanks to everyone who continues to support our growing efforts to bring C4C to Haw Creek Elementary School.

C4C Central

C4C Volunteers Needed

The Congregations for Children (C4C) mission group is looking for additional members of Central to join us. We are a small but mighty group that does a variety of projects benefiting children in our Asheville community. Below are current projects that need hands to help. We also welcome you to join the C4C mission to share your talents and input across all our projects. For more information or to sign up, email Kim Sink & Elizabeth Devereaux at: c4c@centralumc.org.

Food Drive

Our C4C Holiday Food Drive is on the Horizon! We will be collecting non-perishable pantry items. Pantry donations can be dropped off in the Fellowship Hall during the season of Lent, until Palm Sunday on March 24. The C4C team will sort and deliver these to the Resource Center at Emma Elementary on Monday March 25. Items will be used for a community event that supports students & families – ensuring families to have enough food for the week of spring break.

In addition to the food drive, the C4C team is also looking for a Central member to lead this annual Holiday Food Drive. If interested, email c4c@centralumc.org.

Children First Food Drive List:

Breakfast Items:

Hot & cold cereal
Pancake mix
Syrup
Instant Milk

Lunch Items:

Peanut butter
Jelly
Bread



CHILDREN & FAMILY MINISTRIES

[Cont. from pg. 14]

C4C Central Food Drive (Cont.)

Children First Food Drive List (cont.):

Dinner items:

Spaghetti

Spaghetti Sauce

Mac & Cheese

Variety of canned foods and snacks (if desire)



Emma Community Market Needs YOU!

C4C's year-round Emma Community Market project needs more volunteers. The Emma Community Market meets on the first Monday of every month in the outdoor pavilion at Asheville First Church of the Nazarene, 385 Hazel Mill Road (corner of Hazel Mill and Louisiana Ave). Volunteers gather for two shifts: 1-3:00 pm or 3-5:00 pm to organize, set up and distribute purchased and donated food at this self-service market for individuals and families in the West Asheville Emma community. MANNA Food Bank and CIMA (Compañeros Inmigrantes de las Montañas en Acción) host the market. They purchase and collect grocery store donated fruit, vegetables, perishable and shelf stable food for the Emma market and other markets in Asheville and surrounding communities.

Time has eroded our pool of volunteers and C4C needs people to help set up before the market starts at 3:00 pm and to restock items during shopping until 5:00 pm. Can you find a few hours

each month to help our neighbors? Contact Mary Beth Tanner at c4c@centralumc.org to learn more about this project or to volunteer.

Dorm Room Sponsors Needed

College-bound seniors in our community need your generous sponsorship to set off to campus fully supplied. Please sign up to be a Dorm Room Sponsor. This C4C project connects us with Asheville High School seniors that need extra support transitioning to college. From sheets to staplers and everything in between, the Dorm Room Sponsor project gets a deserving student all they need for their dorm room. Many of the students sponsored are the first in their family to attend college. All need our support to have the necessities, the basics, and the extras for their dorm room. The list of supplies is specific, long, and totals around \$350. So feel free to partner with your Sunday school class, your journey group, your Circle, or your friends to share a student. Learn more and sign up for a student by contacting Kim Sink at: c4c@centralumc.org.

Emma Elementary School Teacher Appreciation

C4C treated the teachers and staff of Emma Elementary School to breakfast on Friday, November 17. Breakfast was set up early so that it was available to the teachers before school began for the day. An announcement was made from the office for the teachers and staff to go to this room for breakfast. There they were able to pick up the food and take it with

(Cont. on pg. 16)



Emma Elementary School Teacher Appreciation (Cont. from pg. 15)

them to their classrooms. C4C enjoyed connecting and communicating with teachers as they began their day. They seemed excited and pleased about being appreciated.

It is important that we show our appreciation and support of the staff of Emma Elementary for their dedication as they continue to encourage and enrich the lives of their students.

- Susan Robinson, Project Lead.



We received the following "Thank You" note from Emma Elementary recently:

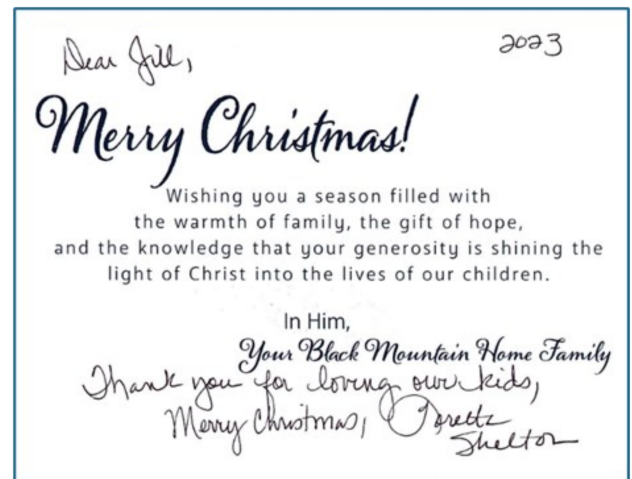
Just wanted to say "Thank You"
for all the love you show
here at Emma Elementary!

Best,
Students & Staff

Angel Tree was a Success

Black Mountain Home for Children enjoyed Central's generosity with 25 children sponsored for gifts under the Christmas Tree.

Thank you to all that joined this project!



The background of the entire page is a light beige color. It is decorated with several green palm fronds. One large frond curves from the top left towards the center. Another frond is on the right side, and a third is at the bottom right. There are also some lighter, more faded fronds in the background.

PALM SUNDAY PARADE & DONKEY WALK

March 24, 2024

10-10:30 a.m.

We will gather in front of
Central UMC Sanctuary steps
to parade down to Pritchard
Park and back

*Collaboration with
Trinity Episcopal / First
Presbyterian / Central UMC*

A colorful poster for an Easter Egg Hunt. The background is light blue with white clouds at the top. In the center, a large white Easter Bunny is depicted, with its head and ears visible on the left and right sides. The bunny has pink inner ears, pink whiskers, and a pink nose. The text is arranged around the bunny. At the top, a purple banner contains the text 'JOIN OUR ANNUAL'. Below this, the words 'EASTER EGG' are in large, pink, outlined letters, and 'HUNT' is in large, purple, outlined letters. The date and time 'SUNDAY MARCH 31, 2024 9:45 AM - ROOM 301' are in purple. A paragraph of text is in the center, and the 'Central. United.' logo is at the bottom. The bottom of the poster features a green grassy field with several decorated Easter eggs in purple, pink, and yellow. The eggs have various patterns like polka dots, zig-zags, and floral designs. The overall style is playful and festive.

JOIN OUR ANNUAL

EASTER EGG HUNT

SUNDAY MARCH 31, 2024
9:45 AM - ROOM 301

Please bring Easter Baskets to collect eggs. We will have a short lesson on the "Legend of The Easter Egg." There will be have donuts, coffee and juice for everyone.

Central. United.

Thriving with Central UMC Youth

Youth group is a place of planting the seeds of curiosity, growing with tears and laughter, and blooming with spiritual confidence. We have nourished each other, and when we are together, we thrive.

Youth Sunday

In November, the youth stepped out on faith and into the pulpit to lead us in worship. They prayed over the passage from Jeremiah 1: 4-10 where Jeremiah protests his call due to his young age, but God assures him that God will use him to guide God's people. At first, our youth (and even our adults) balk at the opportunity to take on leadership but with the nourishment and guidance from God, they show how much God is using them to build and plant God's kin-dom.



seeds
of
wisdom



"...the church has taught me to love others for who they are and to live as my true authentic self..."

(Sophia Banchiere, Grade 11)

"...I know that everyone is my neighbor, I know that God has something planned for me, I know that God is here to help me, I know that Jesus would do anything for me, I know that we should put ourselves in others' shoes, I know we should be kind to ourselves, I know that Jesus loves me..."



(Zach Hykin, Grade 8)



"...not only are we building bridges between the church and the community, but we are building bridges between the generations within the church..."

(Lily Everette, Grade 12)

"...every project, every hike, every service opportunity is a kingdom we've been given the right to change and it's always easier to change something for the better when there are more people to work on it..."



(Cooper Nelson, Grade 12)



"Thank you, God, for our food, for rest and home and all things good, for wind and rain and sun above, but most of all, for those we love."

(Graham Ragland, Grade 7)

"...Central has taught me to always spread a message of love..."

(Annalee Smith, Grade 12)



"...I hope that when you dream of being a superhero, you dream of being kind, making someone laugh, making someone feel wanted. I hope those dreams come to life. I hope that all of us doing all that we can to be a superhero will make a difference."

(Annabel Lingle, Grade 8)

Youth at Christmas

We celebrated the birth of Jesus Christ all month long! We led the congregation in a spontaneous nativity play, played a very competitive game of White Elephant, and led worship at the Children and Youth Families Christmas Eve service.

Central UMC Youth

(Cont. from pg. 19)

Looking Ahead to Summer 2024

We are participating in several major events that we are getting excited about! These events will require lots of participation and lots of preparation.

Youth Spring Retreat | Living out the Lord's Prayer: We are headed to Hinton Rural Life Center April 26-28. There we will play games, rest, and learn about the Lord's Prayer.

Youth Summer Mission Trip | Partnership with Carolina Cross Connection: On June 23, we will head to Manteo in the Outer Banks for a week to do some home repairs and worship with youth groups from across North Carolina and beyond. The youth will work on fundraising in preparation for this trip.

Wilderness Trail | A Beloved Tradition: We're headed up the mountain to the thin place we call Wilderness Trail July 22-27. There, we will draw closer to God and each other by backpacking parts of the Appalachian Mountains.

Fundraising

With big plans comes the need for big fundraising. Central Youth will take this challenge head-on! As we look to the summer, fundraising will go to offset the cost of first, the mission trip, then Wilderness Trail and our summer fellowship opportunities.

Wall of Money | January 21 – March 3: The Wall of Money will have envelopes hooked on a trellis marked with a specific amount of money. Members of the congregation will take an envelope and return it with the corresponding cash. The wall will stand outside the sanctuary.

Youth Stock Program | February – April: The youth will start to reach out to members of their friends and families beyond the Central community. These friends and families will have the opportunity to "buy stock" in the youth's summer activities.

BBQ by the Pound | Easter – June 2: On Easter Sunday, we will announce a BBQ fundraiser. The youth will work shifts to sell BBQ at church in May. At the June potluck, the youth will work with George Pettus to prepare and deliver the BBQ.

Youth Choir at Christmastime



Youth Christmas Party



Youth Spontaneous Nativity Play



Calendar of Events

FEBRUARY 2024

Thursday, February 1:

- 10:00 am Circle of Prayer Meeting, both in person (Library) and on Zoom
- 3:30 pm Thursday Journey Group, Library

Friday, February 2:

- 12:00 pm Equal Plates Contractor Luncheon, Library

Sunday, February 4:

- 8:45 am Worship Service, Sanctuary
- 9:30 am Higher Education Committee, Conference Room
- 9:45 am Sunday School Hour
- 10:55 am Worship Service, Sanctuary
- 11:30 am Children's Church—Chapel (following Children's Time at 10:55 worship, children are invited to the chapel for a story and discussion)
- 12:00 pm Children & Youth Programming
- 12:00 pm Church Potluck Lunch, Fellowship Hall
- 12:45 pm Reconciling Ministries, Room 219

Tuesday, February 6:

- 9:00 am Ruth Circle, Library
- 10:00 am Eve Circle, Parlor
- 10:30 am Staff Meeting, Conference Room
- 12:00 pm Men's Emmaus Meeting, Room 220
- 2:00 pm Dementia Partners Meeting, Library

Wednesday, February 7:

- 9:30 am Anna Circle, Fellowship Hall
- 5:30 pm Montessori Board Event, Fellowship Hall
- 5:30 pm Bell Choir, Bell Choir Room
- 6:30 pm Chancel Choir, Sanctuary

Thursday, February 8:

- 9:30 am Worship Planning Meeting, Conference Room
- 10:00 am Circle of Prayer, Library/Zoom

Saturday, February 10:

- 10:00 am Little Grove Preschool Open House, Fellowship Hall
- 3:00 pm Youth Lock-In Begins, Youth Arena

Sunday, February 11:

- 8:45 am Worship Service, Sanctuary
- 9:45 am Sunday School Hour
- 10:55 am Worship Service, Sanctuary
- 11:30 am Children's Church—Chapel (following Children's Time at 10:55 worship, children are invited to the chapel for a story and discussion)
- 12:00 pm Children & Youth Programming
- 1:00 pm St. Martin in the Fields Wind Ensemble, Sanctuary

Tuesday, February 13:

- 12:00 pm Building Committee Meeting, Conference Room
- 12:00 pm Men's Emmaus Meeting, Room 220
- 3:00 pm Faith & the Arts Meeting
- 5:30 pm Mission Committee Meeting, Conference Room
- 6:30 pm Martha Circle, Library

Ash Wednesday, February 14:

- 1:00 pm East Campus Volunteers & Planning Team Meeting, Library
- 5:30 pm Bell Choir, Bell Choir Room
- 6:00 pm Ash Wednesday Service, Sanctuary (Nursery Available)

(Cont. on pg. 22)

Calendar of Events

FEBRUARY 2024 (CONT.)

Thursday, February 15:

- 9:30 am Worship Planning Meeting, Conference Room
- 10:30 am Circle of Prayer, Library/Zoom

Sunday, February 18:

- 8:45 am Worship Service, Sanctuary
- 9:45 am Sunday School Hour
- 10:55 am Worship Service, Sanctuary
- 11:30 am Children's Church—Chapel (following Children's Time at 10:55 worship, children are invited to the chapel for a story and discussion)
- 12:00 pm Children & Youth Programming
- 3:00 pm Inquirer's Class Chat 'n Chew, Fellowship Hall

Tuesday, February 20:

- 12:00 pm Men's Emmaus Meeting, Room 220
- 2:00 pm Dementia Partners, Library

Wednesday, February 21:

- 5:30 pm Lord, Teach Us to Pray: Studying and Practicing the Lord's Prayer
- 5:30 pm Bell Choir, Bell Choir Room
- 6:00 pm Unnamed Women's Circle, Nursery available from 5:45—8:15 pm in Room 104
- 6:30 pm Chancel Choir, Sanctuary

Thursday, February 22:

- 9:30 am Worship Planning Meeting, Conference Room
- 10:00 am Circle of Prayer, Library/Zoom

Saturday, February 24:

- 9:00 am Montessori School Enrollment Event, Fellowship Hall

Sunday, February 25:

- 8:45 am Worship Service, Sanctuary
- 9:45 am Sunday School Hour
- 10:55 am Worship Service, Sanctuary
- 11:30 am Children's Church—Chapel (following Children's Time at 10:55 worship, children are invited to the chapel for a story and discussion)
- 12:00 pm Children & Youth Programming

Tuesday, February 27:

- 12:00 pm Men's Emmaus Meeting, Room 220

Wednesday, February 28:

- 5:30 pm Lord, Teach Us to Pray: Studying and Practicing the Lord's Prayer
- 5:30 pm Bell Choir, Bell Choir Room
- 6:30 pm Chancel Choir, Sanctuary

Thursday, February 29:

- 9:30 am Worship Planning Meeting, Conference Room
- 10:00 am Circle of Prayer, Library/Zoom



Calendar of Events

MARCH 2024

Sunday, March 3:

- 8:45 am Worship Service, Sanctuary
- 9:45 am Sunday School Hour
- 10:55 am Worship Service, Sanctuary
- 11:30 am Children's Church—Chapel (following Children's Time at 10:45 worship, children are invited to the chapel for a story and discussion)
- 12:00 pm Church Potluck Lunch, Fellowship Hall
- 12:45 pm Reconciling Ministries Meeting, Room 219

Tuesday, March 5:

- 9:00 am Ruth Circle, Library
- 10:00 am Eve Circle, Parlor
- 12:00 pm Men's Emmaus Meeting, Room 220
- 2:00 pm Dementia Partners, Library

Wednesday, March 6:

- 5:30 pm Lord, Teach Us to Pray: Studying and Practicing the Lord's Prayer
- 5:30 pm Bell Choir, Bell Choir Room
- 6:30 pm Chancel Choir, Sanctuary

Thursday, March 7:

- 9:30 am Worship Planning Meeting, Conference Room
- 10:00 am Circle of Prayer, Library/Zoom
- 3:30 pm Thursday Journey Group, Library

Friday, March 8:

- 4:00 pm Asheville Choral Society Concert, Sanctuary

Saturday, March 9:

- 4:00 pm Asheville Choral Society Concert, Sanctuary

Sunday, March 10: (Daylight Savings Time Begins—Spring Forward!)

- 8:45 am Worship Service, Sanctuary
- 9:45 am Sunday School Hour
- 10:55 am Worship Service, Sanctuary
- 11:30 am Children's Church—Chapel (following Children's Time at 10:45 worship, children are invited to the chapel for a story and discussion)
- 12:00 pm Children & Youth Programming

Tuesday, March 12:

- 12:00 pm Building Committee, Conference Room

Wednesday, March 13:

- 6:00 pm Unnamed Women's Circle, Nursery available 5:45—8:15 pm in Room 104
- 6:30 pm Chancel Choir, Sanctuary

Thursday, March 14:

- 9:30 am Worship Planning Meeting, Conference Room
- 10:00 am Circle of Prayer, Library/Zoom
- 7:00 pm Asheville Symphony Violin Recital, Sanctuary

Sunday, March 17:

- 8:45 am Worship Service, Sanctuary
- 9:45 am Sunday School Hour
- 10:55 am Worship Service, Sanctuary
- 11:30 am Children's Church—Chapel (following Children's Time at 10:45 worship, children are invited to the chapel for a story and discussion)
- 12:00 pm Children & Youth Programming
- 5:00 pm Family Life Volunteer Appreciation Dinner, TBD

(Cont. on pg. 23)

Calendar of Events

MARCH 2024 (CONT.)

Tuesday, March 19:

- 12:00 pm Men's Emmaus Meeting, Room 220
- 2:00 pm Dementia Partners, Library

Wednesday, March 20:

- 5:30 pm Lord, Teach Us to Pray: Studying and Practicing the Lord's Prayer
- 5:30 pm Bell Choir, Bell Choir Room
- 6:30 pm Chancel Choir, Sanctuary

Thursday, March 21:

- 9:30 am Worship Planning Meeting, Conference Room
- 10:00 am Circle of Prayer, Library/Zoom

Palm Sunday, March 24:

- 8:45 am Worship Service, Sanctuary
- 9:45 am Sunday School Hour
- 10:00 am Donkey Walk/Palm Sunday Parade, Sanctuary Front Steps—Join us at the front steps of the church Sanctuary. We will parade together to Pritchard Park.
- 10:55 am Worship Service, Sanctuary
- 11:30 am Children's Church—Chapel (following Children's Time at 10:45 worship, children are invited to the chapel for a story and discussion)
- 12:00 pm Children & Youth Programming

Tuesday, March 26:

- 12:00 pm Men's Emmaus Meeting, Room 220

Wednesday, March 27:

- 5:30 pm Lord, Teach Us to Pray: Studying and Practicing the Lord's Prayer
- 5:30 pm Bell Choir, Bell Choir Room
- 6:30 pm Chancel Choir, Sanctuary

Maundy Thursday, March 28:

- 9:30 am Worship Planning Meeting, Conference Room
- 10:00 am Circle of Prayer, Library/Zoom
- 6:00 pm Maundy Thursday Service, Sanctuary (Nursery Available)

Good Friday, March 29:

- 6:00 pm Good Friday Service, Sanctuary (Nursery Available)

Easter Sunday, March 31:

- 7:00 am Easter Sunrise Service, East Campus
- 8:45 am Worship Service, Sanctuary
- 9:45 am Children's Easter Egg Hunt, Room 301
- 9:45 am Sunday School Hour
- 10:55 am Worship Service, Sanctuary





Puzzle!

After solving the equations, write the words on the correct numbered lines below. Complete Ephesians 1:3 (NIV) to discover how God shows his great love for us.

$14 - 7 =$ ___ Father
 $10 + 9 =$ ___ heavenly
 $9 + 9 =$ ___ the
 $12 + 12 =$ ___ blessing
 $2 - 1 =$ ___ Praise
 $7 + 7 =$ ___ has
 $11 + 11 =$ ___ every
 $13 + 13 =$ ___ Christ
 $8 + 8 =$ ___ us
 $10 + 10 =$ ___ realms
 $8 + 9 =$ ___ in
 $5 + 5 =$ ___ Lord
 $10 + 11 =$ ___ with

$10 + 15 =$ ___ in
 $10 - 5 =$ ___ God
 $6 - 3 =$ ___ to
 $12 - 6 =$ ___ and
 $6 + 6 =$ ___ Christ
 $18 - 9 =$ ___ our
 $22 - 11 =$ ___ Jesus
 $1 + 1 =$ ___ be
 $7 + 6 =$ ___ who
 $2 + 2 =$ ___ the
 $10 + 5 =$ ___ blessed
 $4 + 4 =$ ___ of
 $10 + 13 =$ ___ spiritual

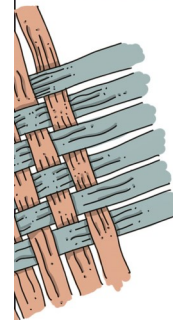
1	2	3	4	5	6
7	8	9	10	11	12
13	14	15	16	17	18
19	20	21	22		
23	24	25	26		

Ephesians 1:3, NIV

Answer: Praise be to the God and Father of our Lord Jesus Christ, who has blessed us in the heavenly realms with every spiritual blessing in Christ. Ephesians 1:3, NIV



Handicrafts can spark appreciation for simple items. Weave this basket as a gift.



What you need:

- Paper plate
- Pencil
- Scissors
- Yarn (different colors)

What you do:

1. In the center of the plate, trace something round. Draw 9 lines (evenly spaced) from the circle to the plate's edge.
2. Cut along each line, stopping at the center circle. Trim more of the plate off so the cuts make a gradual V shape.
3. Fold the plate's sides upward to form basket sides. Keep these upright as you weave a bowl-shaped basket.
4. Begin weaving a length of yarn at the circle's base. Hold the end of the yarn in place as you spread the length over and under each side of the plate.
5. Switch colors to make a pattern. Keep the yarn tight as you weave up the sides.
6. To finish, bend down any remaining paper. Leave a tail of yarn and tuck it under a woven portion. Share your craft with a friend!

Jot & Tittle (USPS 005-511)

Published bimonthly by

Central United Methodist Church

Periodical postage paid at Asheville, NC •

ISSN 1052-7966 • Postmaster: Send address
changes to Jot & Tittle, Central United

Methodist Church, 27 Church Street •

Asheville, NC 28801 • Phone 828-253-3316

Website: www.centralumc.org

Non-Profit Org.
U.S. POSTAGE
PAID
ASHEVILLE, NC
Permit No. 5511



A community for Christ in the center of the city.